



# International Seabed Authority: Functions and structure

Michael W. Lodge

Abuja, October 2022



# International Seabed Authority

UNCLOS, Part XI, Section 4 (Arts. 156-185) and 1994 Implementation Agreement



International Tribunal for  
the Law of the Sea



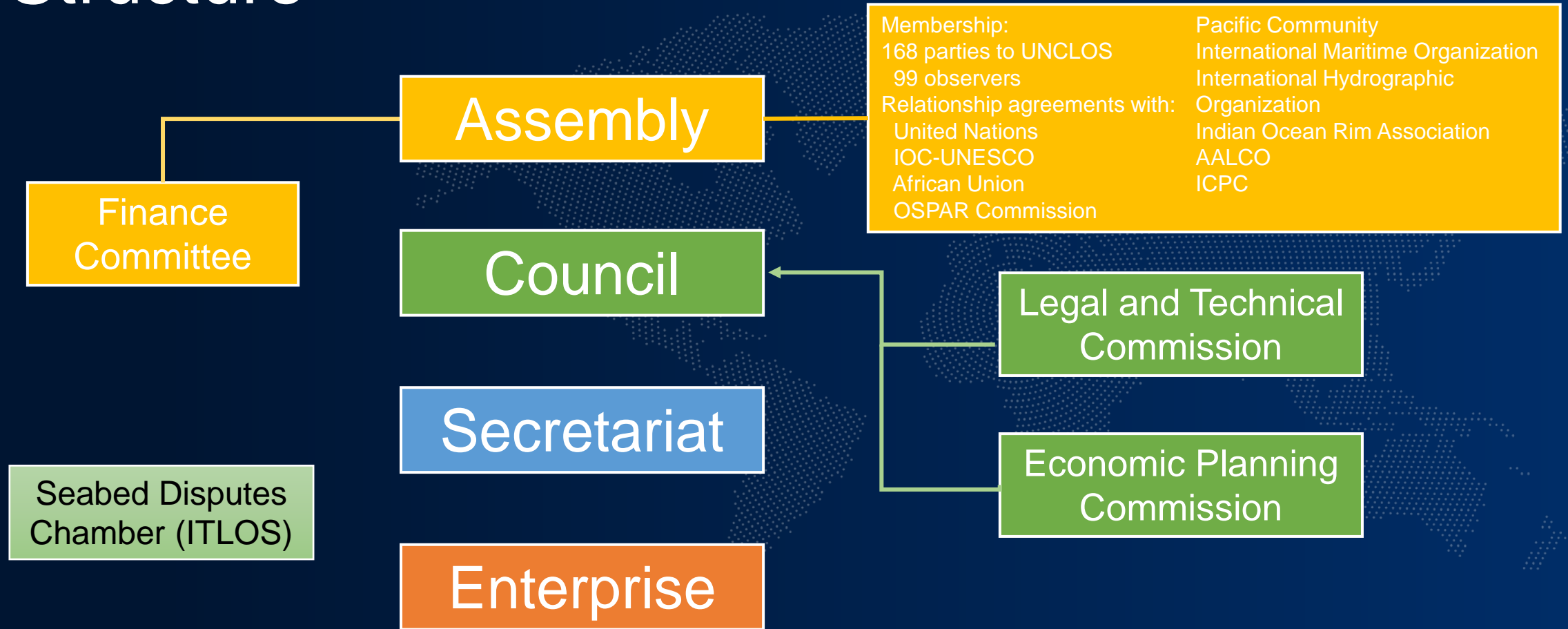
Commission for the Limits of  
the Continental Shelf



# Core functions

- 1 Regulate activities in the Area
- 2 Promote and encourage MSR
- 3 Promote and encourage transfer of technology
- 4 Promote international cooperation
- 5 Article 82 distribution from continental shelf

# Structure



# Assembly



## Powers

- Establish general policies
- Elect Secretary General
- Elect Director General of Enterprise
- Approve rules, regulations and procedures as adopted by Council
- Approve budget, as recommended by Council, based on recommendation of Finance Committee
- Approve scale of assessments

# Assembly



## Decision-making

- Consensus, as general rule
- Financial and budget: based on recommendation of Finance Committee
- Decisions where Council also has competence must be based on recommendation of Council
- If Assembly disagrees, must return to Council.

# Council

36 members elected by the Assembly

Group A  
Major consumers or  
importers

Japan  
China  
Russia  
Italy

Group B  
Major investors

France  
Germany  
India  
R.O. Korea

Group C  
Land-based  
producers

Australia  
Canada  
Chile  
South Africa

Group D  
Special interests

Bangladesh  
Brazil  
Fiji  
Jamaica  
Lesotho  
Uganda

Group E  
Equitable geographic  
representation

Argentina	Nigeria
Cameroon	Norway
Costa Rica	Poland
Czechia	Sierra Leone
Ghana	Singapore
Indonesia	Spain
Mexico	Tonga
Morocco	Trinidad &
Mozambique	Tobago
Netherlands	UK

WEOG	9	
GRULAC	7	
Africa	9	= 37
Eastern Europe	3	
Asia Pacific	9	

# Council

## Complex decision-making rules

Chamber A  
Major consumers or  
importers

Japan  
China  
Russia  
Italy

Chamber B  
Major investors

France  
Germany  
India  
R.O. Korea

Chamber C  
Land-based  
producers

Australia  
Canada  
Chile  
South Africa

Chamber D  
Developing States in  
Groups D and E

Bangladesh	Indonesia
Brazil	Mexico
Fiji	Morocco
Jamaica	Mozambique
Lesotho	Nigeria
Uganda	Sierra Leone
Argentina	Singapore
Cameroon	Tonga
Costa Rica	Trinidad &
Ghana	Tobago

No chamber  
(Count towards  
overall majority)

Czechia  
Netherlands  
Norway  
Poland  
Spain  
United Kingdom

Decision-making by consensus as a general rule. Consensus required for rules, regulations and procedures and amendments to Part XI

Voting: Two-thirds majority (24), provided **not opposed** by a majority in A, B, C or D



# Subsidiary bodies

## Legal and Technical Commission

---

- 15 members (currently increased to 41)
- Review plans of work
- Draft rules, regulations and procedures
- Supervise activities in the Area
- Environmental monitoring and assessment (including draft REMPS)
- Initiate enforcement action

## Economic Planning Commission

---

- 15 members (not yet established)
- Recommendations on compensation to land-based developing State producers (Article 151(10))
- LTC carries out limited functions during interim period

## Finance Committee

---

- 15 members (must include 5 largest contributors: China, Japan, Germany, UK, France)
- Budget recommendations
- Internal financial control
- Rules, regulations and procedures for equitable sharing

# Secretariat





## International Seabed Authority

14 - 20 Port Royal Street Kingston, Jamaica

Phone: +1 (876) 922-9105

Fax: +1 (876) 922-0195

**[isa.org.jm](http://isa.org.jm)**