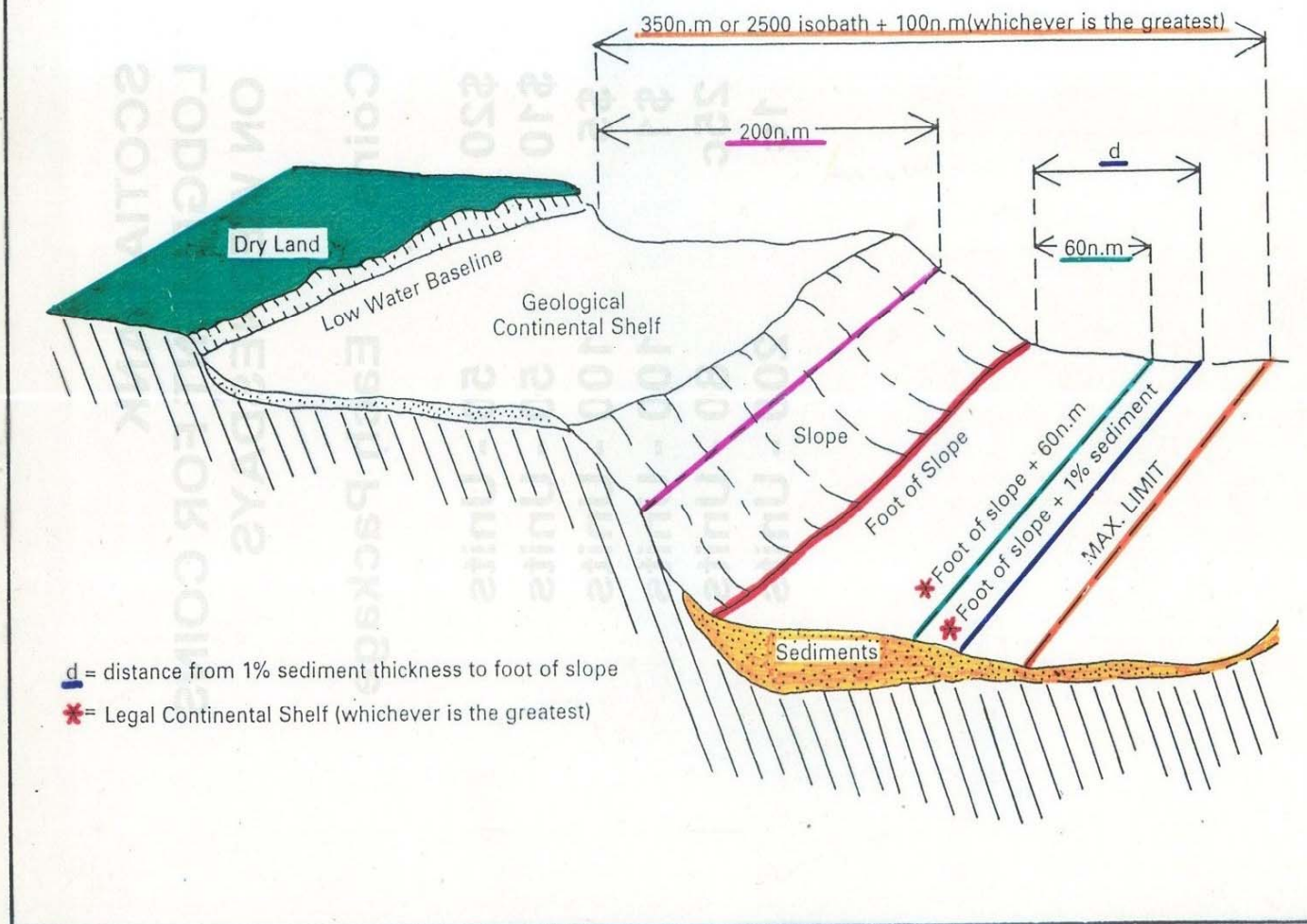


THE COMMISSION ON THE
LIMITS OF THE
CONTINENTAL SHELF (CLCS)

Legal Continental Shelf (UNCLOS Art 76)



Purpose of the Commission

- Examine Submissions
- Provide Advice

Organization of the Commission

- Officers
- Subsidiary bodies
- Sub-Commission

Planning For a Submission to the CLCS

A multi-disciplinary approach involving the following professionals:

- Hydrographer
- Geologist
- Geophysicist
- Legal
- Geodesist
- Finance
- GIS Officers
- Coordinator

Matters To Be Considered

During the planning process, there are matters that need serious consideration.

These include:

- Unresolved maritime boundaries that may affect the claim
- Any issue of overlapping claims

The Desktop Study

In order to minimize cost a desktop study is done to estimate the following:

- The extent of the area
- The amount of work involved
- The personnel required
- The cost
- The area where work needs to be done

Data Requirements

- Data for the Desktop Study – from organizations holding data sets for the world oceans
- Minimum for submission – bathymetric profiles , seismic profiles.
- Supporting data – images from:
 - Magnetic surveys
 - Gravity surveys
 - Multibeam surveys

Data Analysis

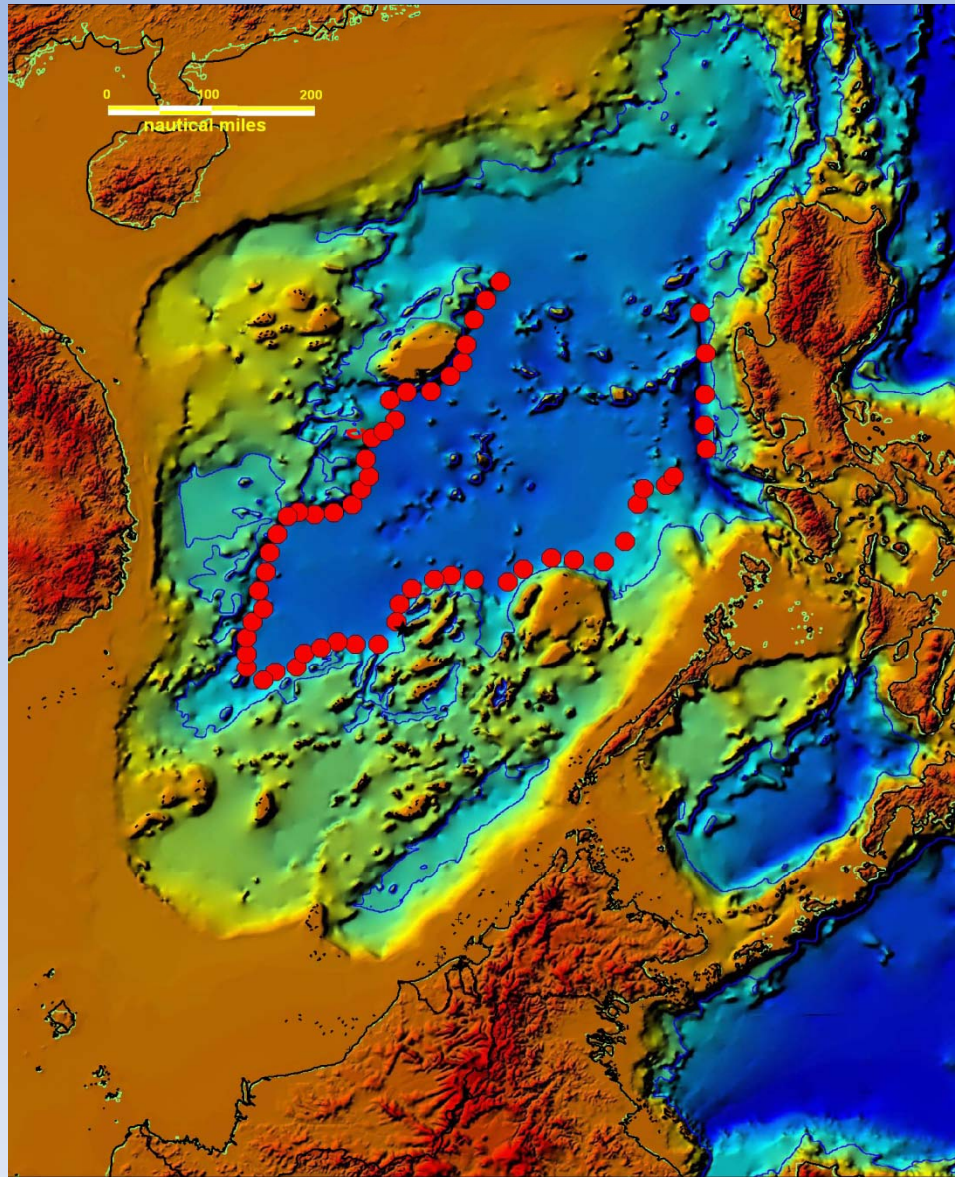
- Determination of constraint lines
 - 2500 metre isobath + 100 nautical miles
 - 350 nautical miles from baseline
- Determine outer limit of continental shelf using:
 - 1% sediment thickness formula
 - Foot of slope + 60 nautical miles
- Calculate outer limit

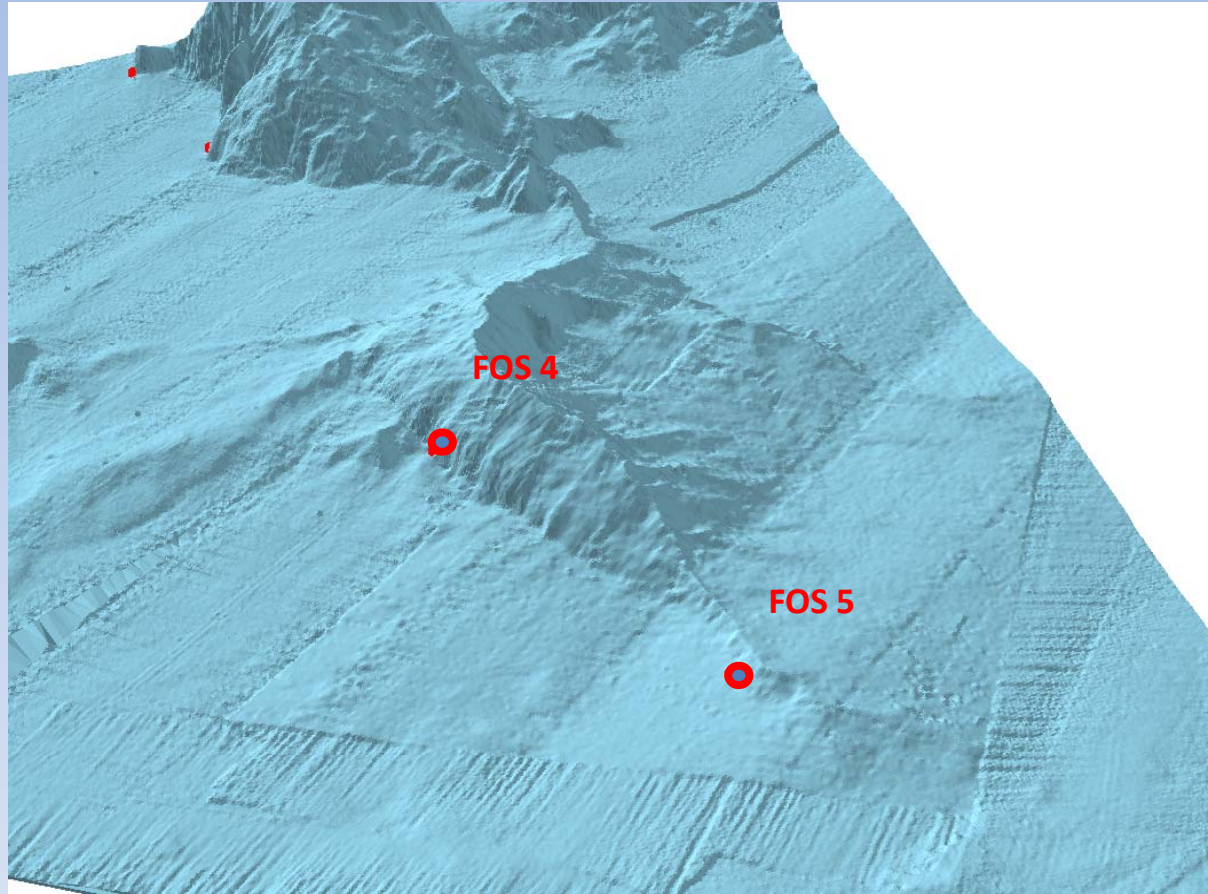
Identification of The Foot of The Continental Slope

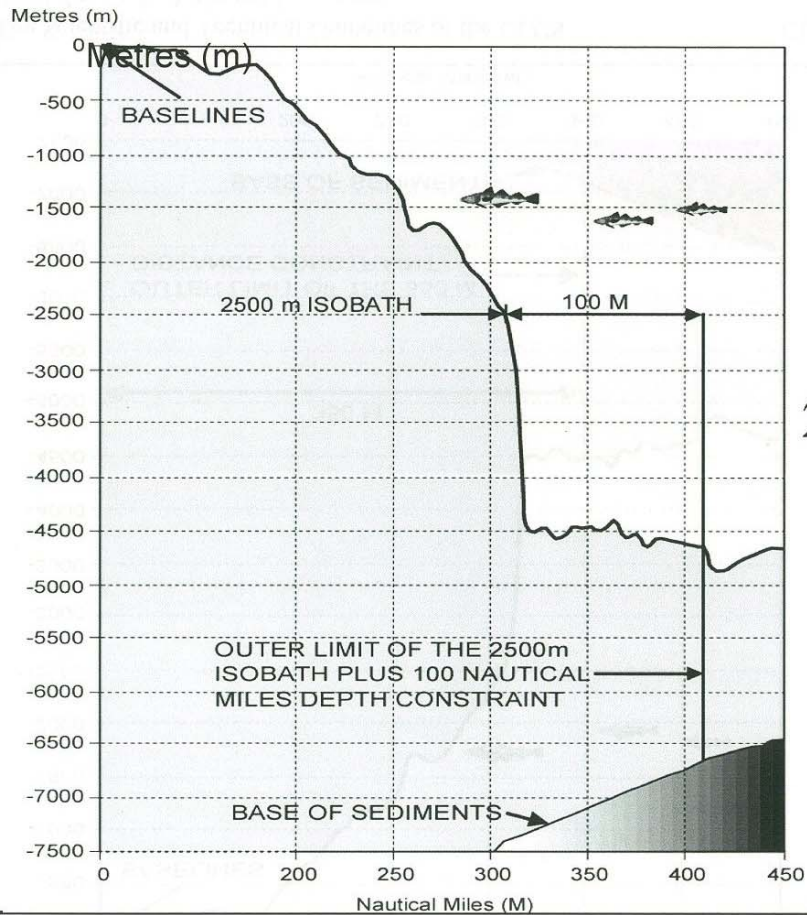
Defined as the maximum change in gradient at the base of the slope, this requires:

- General idea of seabed morphology
- Bathymetric profiles
- Supportive images

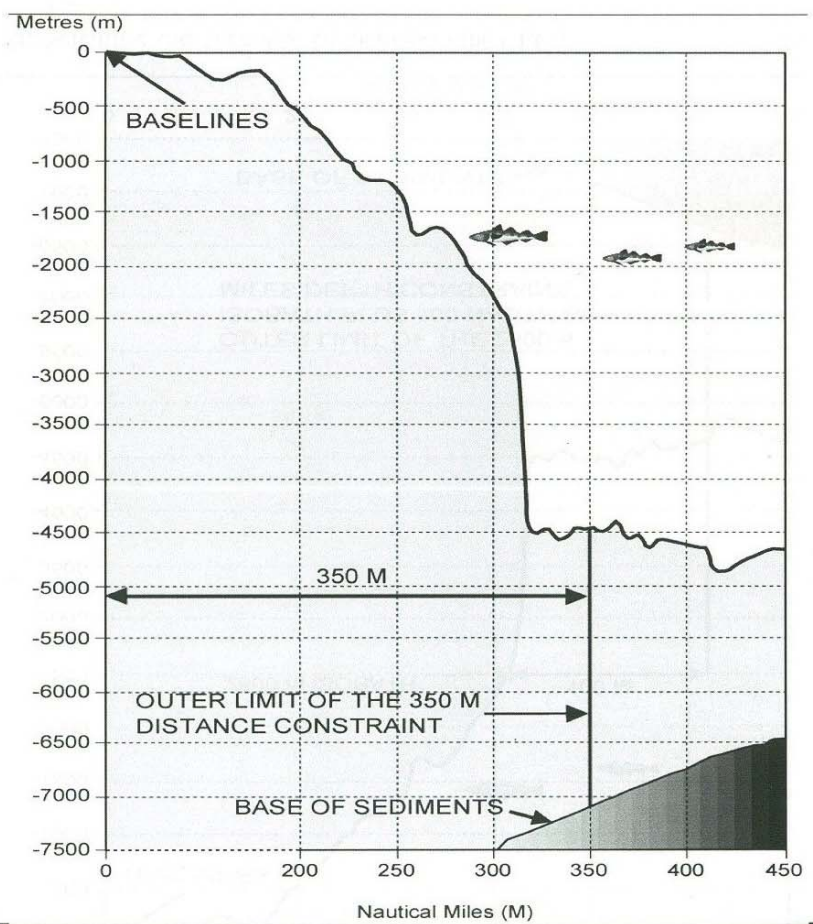
Geology, Geomorphology, and Potential FOS



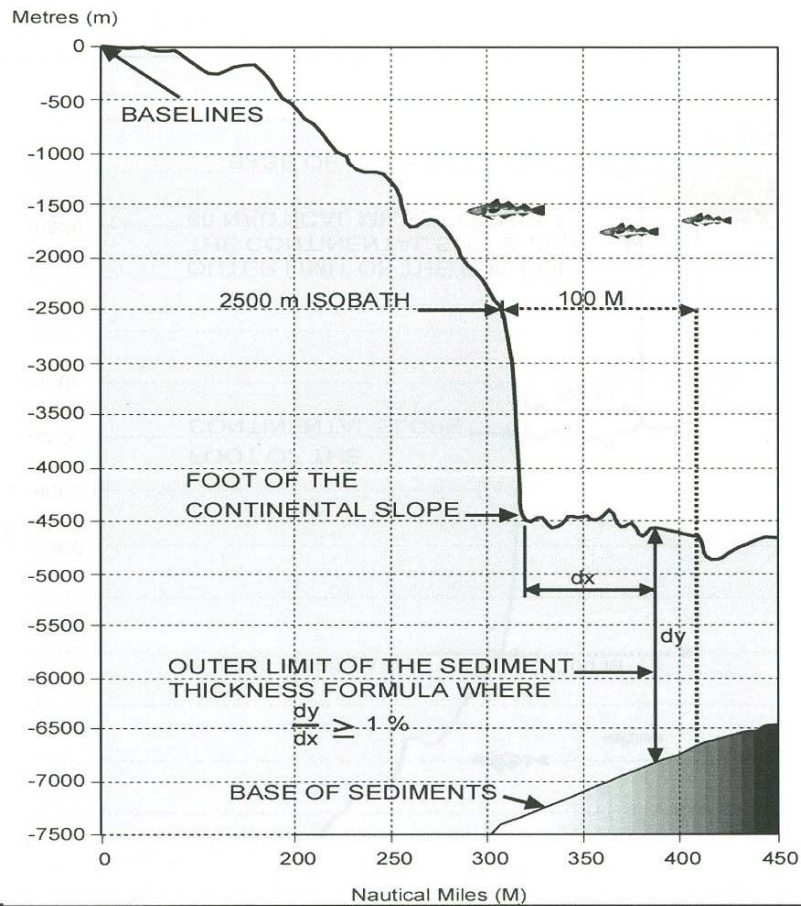




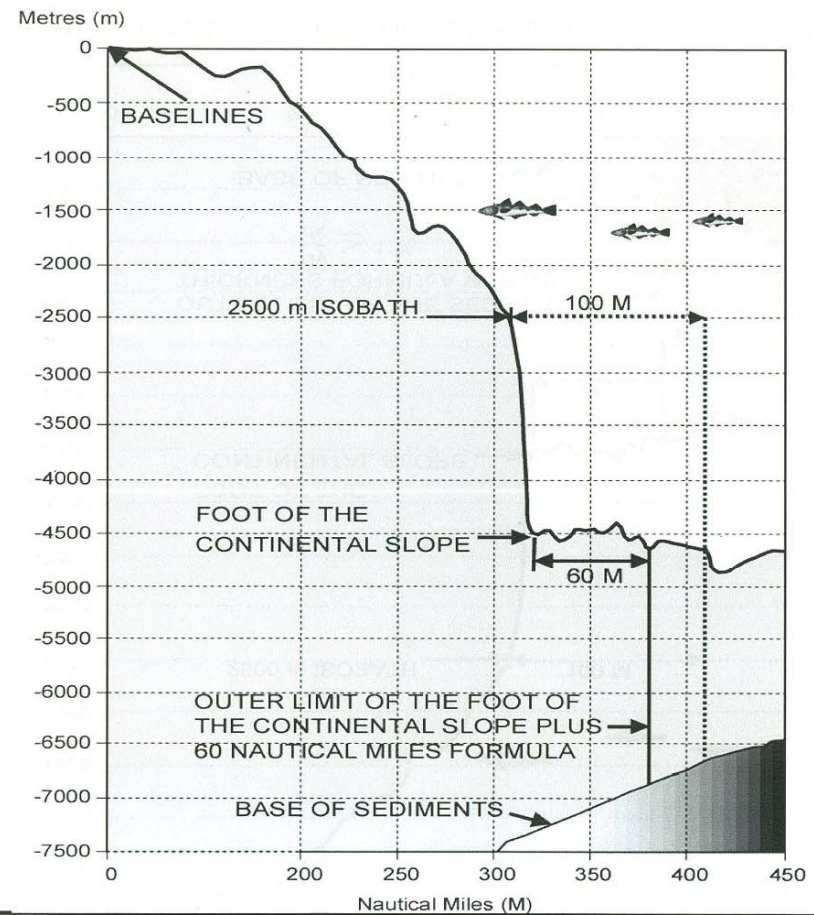
2,500 m isobath plus
100 M constraint



350 M distance
constraint



Foot of the
continental slope
plus 1% sediment
thickness formula



Foot of the continental slope plus 60 M formula

Format of the Submission to the CLCS

The CLCS requires the submission to be done in three (3) parts:

- Executive summary
- Main Body
- List of supporting documents

Preparing the Submission

- **The executive summary consists of:**
 - Introduction
 - Area
 - Provisions of Article 76 invoked
 - Delimitation Issues
 - Statement on Commission members providing advice
 - Coordinates and information relating to the final outer limits
- **Main Body**
 - Geomorphology of the area
 - Demonstration of natural prolongation
 - Description and Analysis
 - Foot of slope selection

Preparing the Submission cont'd...

- **Main Body**
 - Selection of outer limits
 - References
- **Supporting Documents**
 - Charts
 - Coordinates
 - Any other supporting information

Presentation of the Submission

- Submission is presented to the UN Secretary General
- Due publicity is given in accordance with UN rules
- CLCS convene meeting to examine submission.
- Submission is presented by coastal state representative
- Nomination and selection of members of sub-commission who will examine submission
- Arrangements made for meeting of sub-commission

Preliminary Assessment of the Submission

The sub-commission will first make a preliminary assessment of the submission to ascertain the following:

- The format complies with that specified by the commission
- If there is a need for any clarification by the submitting coastal state
- If there are relevant disputes to be considered
- If there is a need for specialist advice, whether from within the commission or external

The sub-commission will then report back to the Commission on requirements and estimated time to examine the submission.

Examination of the Submission

- Sub-commission considers all relevant data submitted
- Sub-commission arrives at final decision
- Sub-commission reports back to the Commission

Cost

Collection of data involves:

- Technical Personnel
- Ship & Crew
- Equipment

Benefits

- Potential for hydrocarbons
- Fisheries
- Minerals

The cost involved in the data collection could be recovered by dividing the area into blocks which can be sold to oil companies for Petroleum exploration.

Acknowledgements

CLCS – Use of diagrams and other information

Dr. Jafaar – Use of diagrams and other information