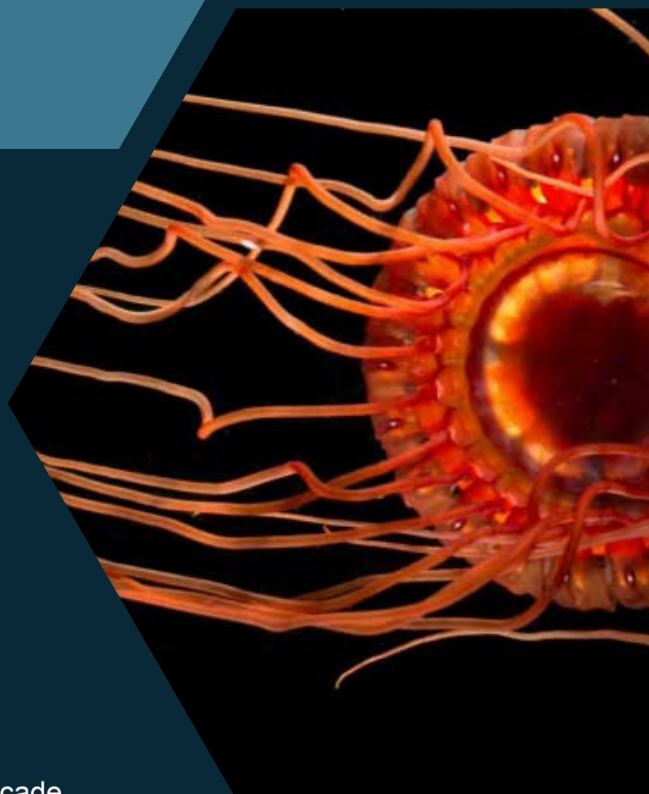
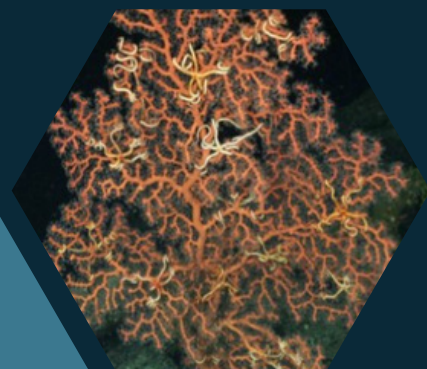
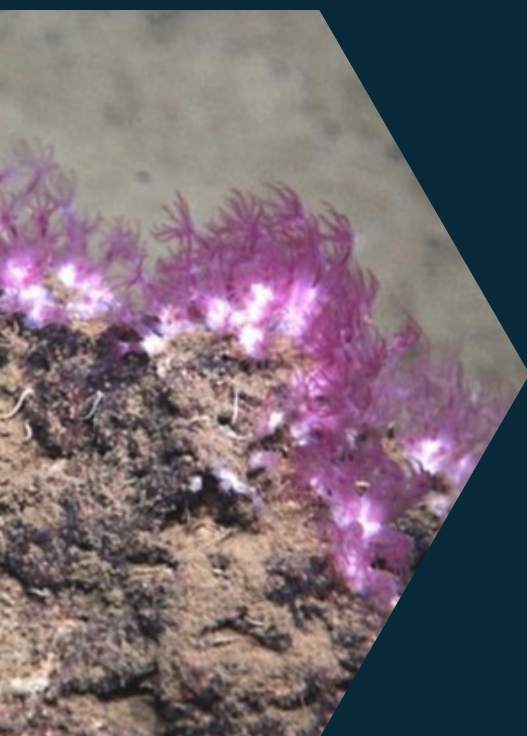




**Sustainable
Seabed
Knowledge
Initiative**

Advancing knowledge in deep-sea
biodiversity to inform global policy
agendas for the benefit of humankind



**2021
2030** United Nations Decade
of Ocean Science
for Sustainable Development

About SSKI

The Sustainable Seabed Knowledge Initiative (SSKI) of the International Seabed Authority (ISA) aims to transform our understanding of the planet's largest ecosystem, the deep sea.



SSKI and global biodiversity policy agendas

Enhanced understanding of deep-sea ecosystems and biodiversity is needed to achieve the ambitious goals of the United Nations 2030 Agenda for Sustainable Development, in particular Sustainable Development Goal 14 (SDG 14), and inform existing and emerging global ocean agendas such as the new BBNJ Agreement and the Kunming-Montreal Global Biodiversity Framework.

Through the generation of new knowledge, and innovation in the availability and flow of data and expertise, SSKI will strengthen the scientific foundation for effective protection and management of deep-sea ecosystems in the international seabed area (the Area).

SSKI and the UN Decade of Ocean Science

SSKI is one of ISA's flagship initiatives to implement its Action Plan for Marine Scientific Research in support of the UN Decade of Ocean Science for Sustainable Development adopted by all Members in 2020 and the six strategic research priorities.

Discovery of new species

SSKI will describe at least 1,000 new species from deep-sea habitats in areas beyond national jurisdiction by 2030, including regions of the Area that are currently being explored for mineral resources and may be targeted for future exploitation.

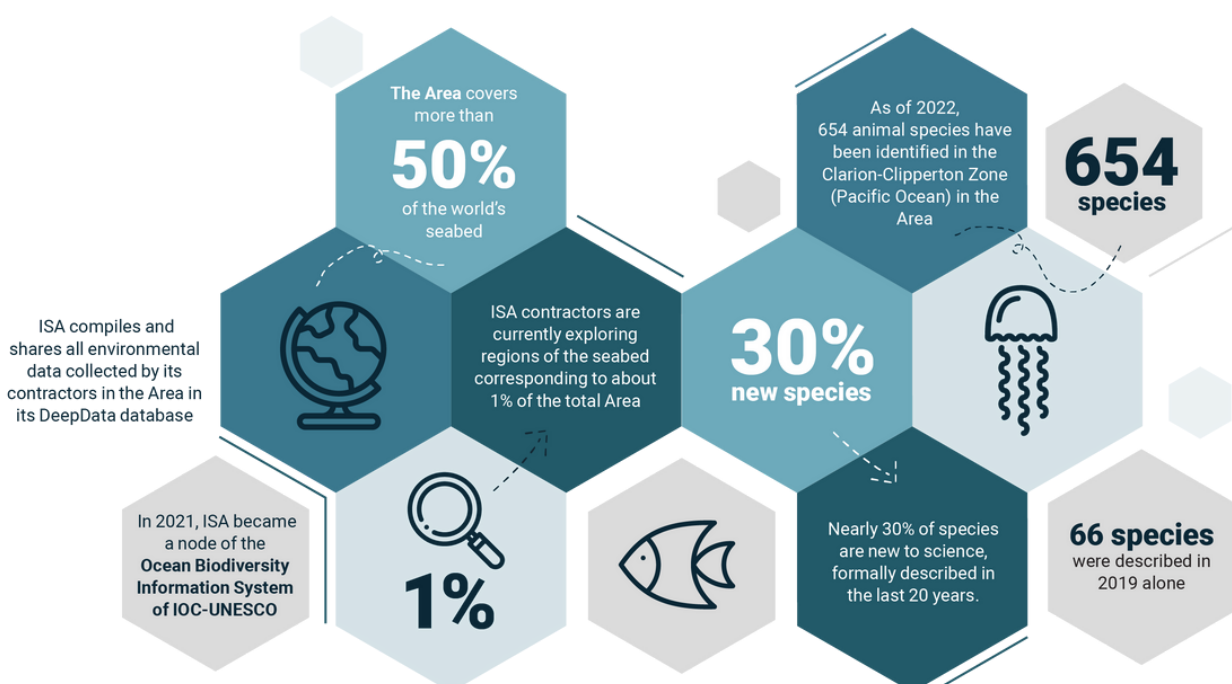
Mapping life on the seafloor

The initiative and the new knowledge it will generate will enable scientists to create maps of life on the seafloor and help us understand and manage the possible effects of anthropogenic activities on deep-sea ecosystems.

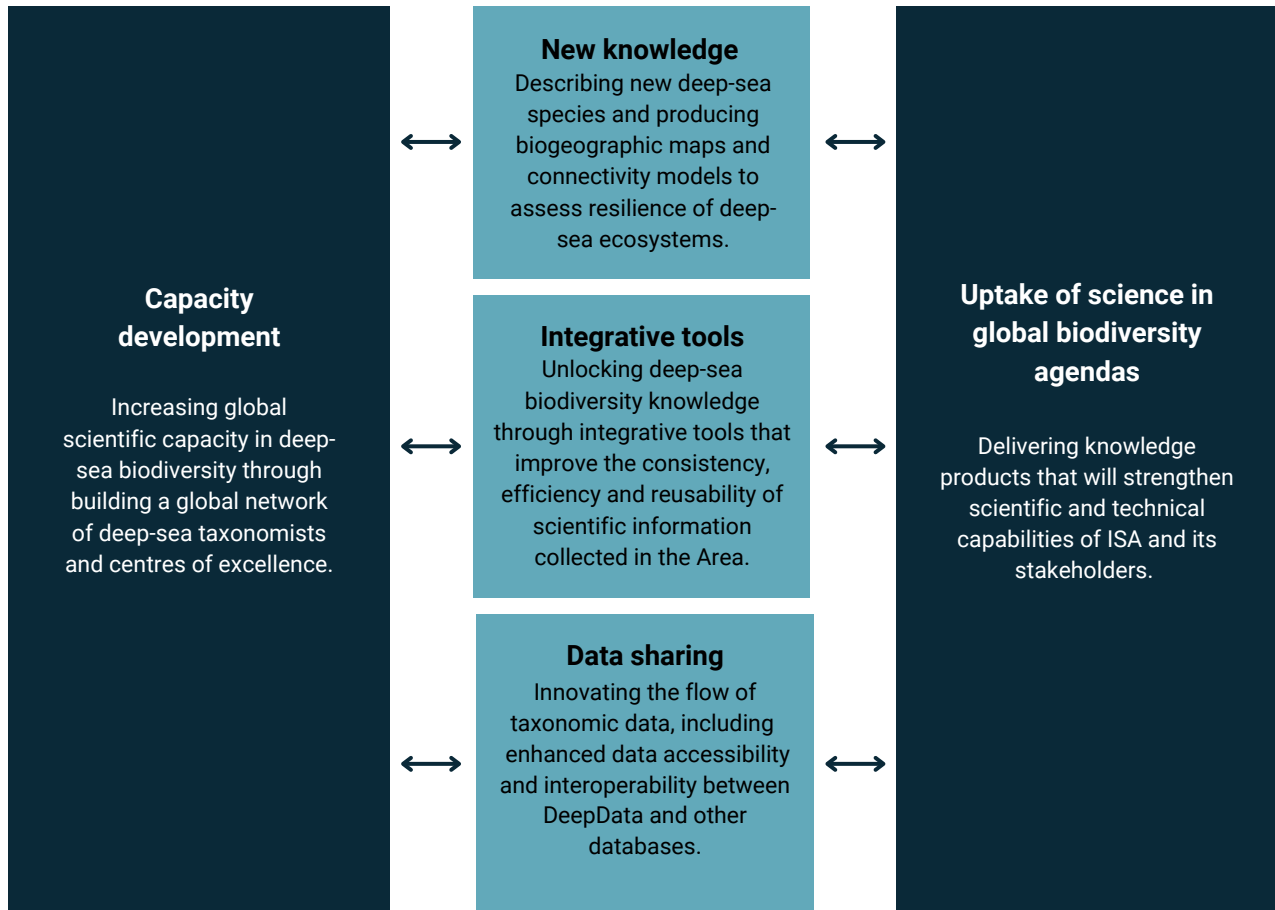
Technology-driven science and research

New genomic and image libraries, combined with artificial intelligence and app-based field tools will be developed for assessing deep-sea biodiversity. Along with building capacity, SSKI will create a lasting legacy of knowledge of the deep sea and the deep seabed, benefiting humankind as a whole.

DID YOU KNOW?



SSKI objectives



SSKI theory of change

SSKI is built around a theory of change which recognizes that concerted global efforts are required to advance the knowledge of deep-sea biodiversity and increase scientific research capacity, so that effective environmental management measures can be implemented to protect the marine environment, and achieve UNCLOS vision of sustainable use of the ocean and its resources for the benefit of humankind as a whole.

SSKI will develop within the context of the UN Decade of Ocean Science, and thereby contribute to the achievement of SDG 14, and other goals and targets for global ocean governance. It will do so by fostering cooperation to develop scientific capacity, enhance access to scientific data and facilitate science-policy dialogue to support evidence-based policies informed by the best available science.

Partners and activities

SSKI brings together leading experts and institutions in deep-sea biodiversity research, monitoring and management to develop new methods and knowledge, creating an unprecedented framework for sustainable development of activities in the Area.



DeepData

The ISA DeepData database hosts all data related to deep-seabed activities, particularly those collected by ISA contractors during their exploration activities, and other relevant environmental and resources-related data for the Area.



ONE THOUSAND REASONS

An initiative to support taxonomy projects to describe deep-sea species

Up to USD20,000 grant towards

Laboratory analysis



Data processing and analysis



Bench fees



Personnel remuneration



Publication and dissemination



Help us make a difference



Engage with SSKI

We want to thank our partners for their ongoing support. If you would like to find out more about joining SSKI please get in touch.

For more information:

oemmr-secretariat@isa.org.jm
isa.org.jm/sski





International Seabed Authority
14 - 20 Port Royal Street, Kingston, Jamaica
isa.org.jm

July 2023