



PERMANENT MISSION OF GHANA TO THE UNITED NATIONS  
19 EAST 47TH STREET  
NEW YORK, N.Y. 10017  
TEL. NO. 212-832-1302

UN-15

The Permanent Mission of the Republic of Ghana to the United Nations presents its compliments to the Secretary-General of the International Seabed Authority and with reference to Article 84 paragraph 2 of the 1982 United Nations Convention on Law of the Sea, has the honour to deposit with the latter, as depositary of the United Nations Convention on the Law of the Sea, charts and lists of geographical coordinates of points, accompanied by illustrative maps concerning the External Limits of the Continental Shelf of the Republic of Ghana.

The External Limits of the Continental shelf of the Republic of Ghana beyond 200 nautical miles from the baselines are established on the basis of the Recommendations adopted by the Commission on the Limits of the Continental Shelf in respect of the submission made by Ghana.

The Secretary-General is kindly requested to give due publicity to the deposit, in accordance with the Convention, including, through the publication of the deposited material and information in the Law of the Sea Bulletin and on the website of the Division for Ocean Affairs and the Law of the Sea.

The Permanent Mission of the Republic of Ghana to the United Nations avails itself of this opportunity to renew to the Secretary-General of the International Seabed Authority, the assurances of its highest consideration.

New York, 1 November, 2023

**THE SECRETARY-GENERAL  
THE INTERNATIONAL SEABED AUTHORITY  
KINGSTON, JAMAICA**



**REPUBLIC OF GHANA**



**EXTERNAL LIMITS OF THE CONTINENTAL SHELF  
OF  
GHANA**

OCTOBER 2023

## TABLE OF CONTENTS

<b>Serial</b>	<b>Contents</b>	<b>Page</b>
1.	Table of Contents	i
2.	Outer Limits of the Continental Shelf of Ghana	1
3.	Geodetic System for the Chart	2
4.	The Configuration of Outer Limits of the Continental Shelf of Ghana	3 and 4

## OUTER LIMITS OF THE CONTINENTAL SHELF OF GHANA

Table: 1. Points Defining the Outer Limits of the Continental Shelf of Ghana on the East and West.

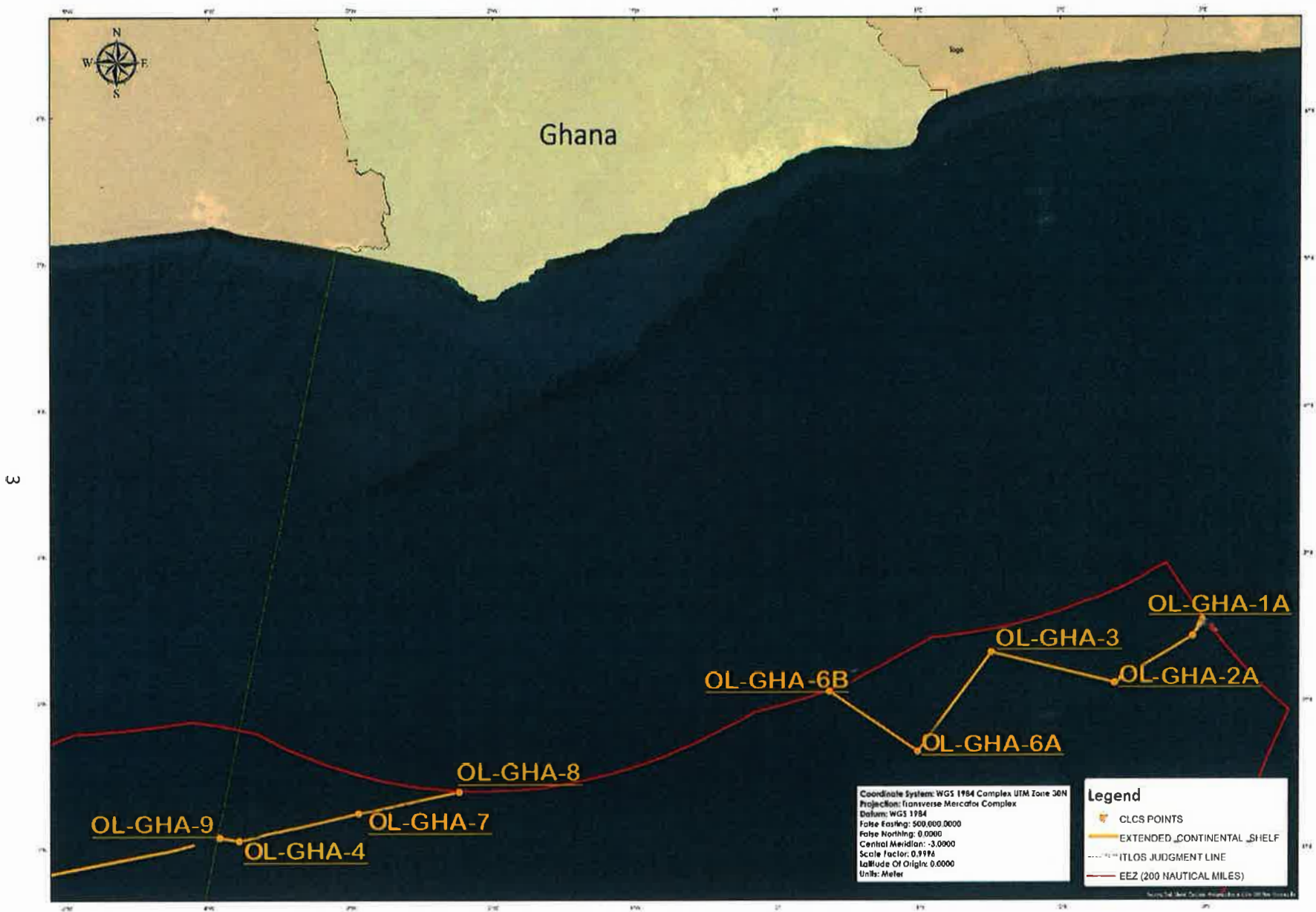
	Point	Final Outer Limit Point	Longitude	Latitude	Article 76 Criterion	Distance to Next OL Point
<b>EAST</b>	1	OL-GHA-5A	2.9733719°E	2.5518337°N	4 (a) (i)	7.63 M
	2	OL-GHA-1A	2.9062767°E	2.4431473°N	4 (a) (i)	38.00 M
	3	OL-GHA-2A	2.3571366°E	2.1260285°N	4 (a) (i)	53.18 M
	4	OL-GHA-3	1.4961533°E	2.3365117°N	4 (a) (i)	50.73 M
	5	OL-GHA-6A	0.9814°E	1.6622°N	4 (a) (i)	44.58 M
	6	OL-GHA-6B	0.3614281°E	2.0736017°N	200 M	-
<b>WEST</b>	<b>Point</b>	<b>Final Outer Limit Point</b>	<b>Longitude</b>	<b>Latitude</b>	<b>Article 76 Criterion</b>	<b>Distance to Next OL Point</b>
	1	OL-GHA-8	2.2379639°W	1.3889691°N	200 M	43.66 M
	2	OL-GHA-7	2.9500450°W	1.2410381°N	4 (a) (i)	51.47 M
	3	OL-GHA-4	3.7865667°W	1.0535450°N	4 (a) (i)	8.30 M
	4	OL-GHA-9	3.9230000°W	1.07561111°N	4 (a) (i)	-

## **GEODETIC SYSTEM FOR THE CHART**

1. Coordinate System: WGS 1984 Complex UTM Zone 30N
2. Projection: Transverse Mercator Complex
3. Datum: WGS 1984
4. False Easting: 500,000.0000
5. False Northings: 0.0000
6. Central Meridian: -3.0000
7. Scale Factor: 0.9996
8. Latitude Of Origin: 0.0000
9. Unit: Meter

# THE CONFIGURATION OF OUTER LIMITS OF THE CONTINENTAL SHELF

## CHARTS

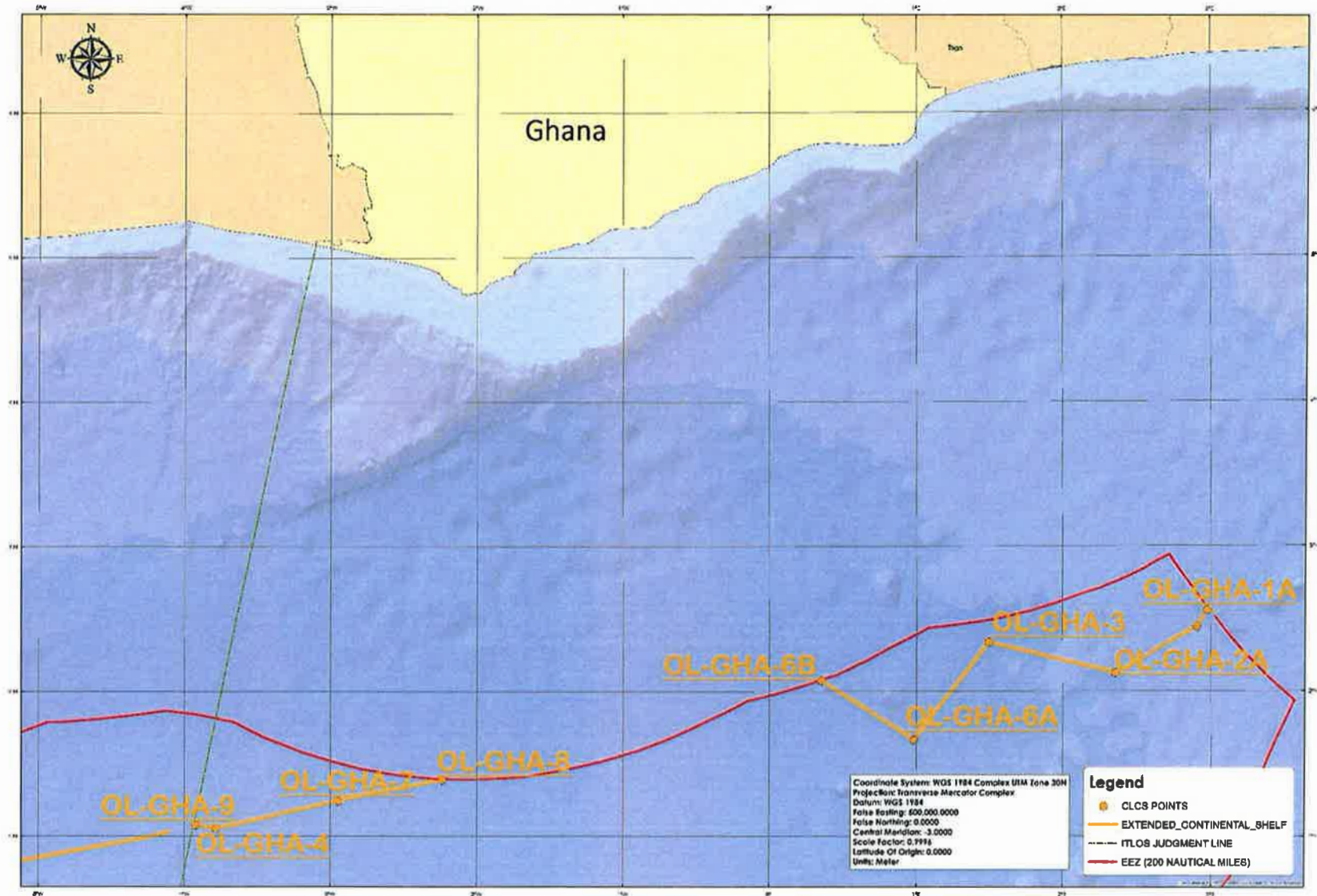


## NOTES

Map of configuration of the Outer Limits of the Continental Shelf of Ghana (Yellow Lines) as revised by Ghana are delineated by straight lines not exceeding 60 M in length. The outer Fixed Points are indicated with the Orange Dots. The Red line indicates the 200 Nautical miles (M). limits of Ghana and its neighbours.

# THE CONFIGURATION OF OUTER LIMITS OF THE CONTINENTAL SHELF

## CHARTS



## NOTES

Map of configuration of the Outer Limits of the Continental Shelf of Ghana (Yellow Lines) as revised by Ghana are delineated by straight lines not exceeding 60 M in length. The outer Fixed Points are indicated with the Orange Dots. The Red line indicates the 200 Nautical miles (M) limits of Ghana and its neighbours.