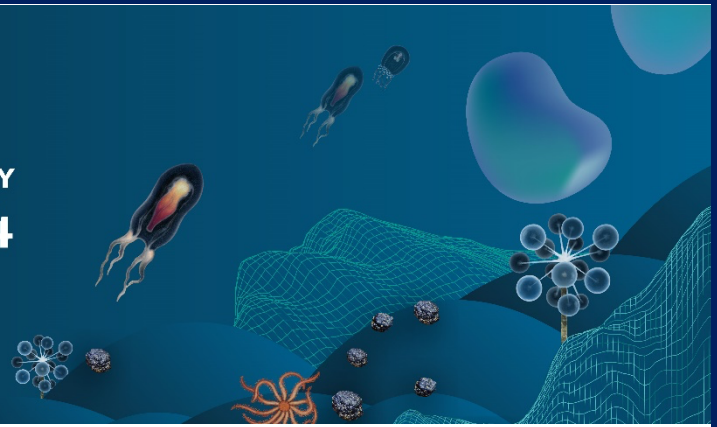




**INTERNATIONAL SEABED AUTHORITY**  
**29<sup>TH</sup> SESSION 2024**



*In line with the headquarters agreement between the Government of Jamaica and ISA, the ISA Secretariat has a security plan for each session which lays down the lines of responsibility and coordination between the ISA internal security team (one person), the JCF, Fire Brigade and other national authorities, including the JCC security staff. The security plan is also fully aligned with the UN Country Team security plan, which is administered by UNDSS and follows the UN procedures and practices globally.*

In the event of a safety or security incident/crisis, under the framework of cooperation between the International Seabed Authority (ISA) and the United Nations, the ISA Secretariat relies on the guidance of the United Nations Department of Safety and Security (UNDSS) including for defining roles and responsibilities, as well as procedures expected to be followed by all ISA staff personnel as well as delegates attending the meetings of ISA according to their position and function in times of critical events/crises<sup>1</sup> or during safety or security incidents.

ISA has a dedicated security officer as the focal point for communications with UNDSS and UNDSS will be the focal point for communication with UNDSS HQ and the UN Agency regional/ HQ security officers.

The relevant security personnel in Jamaica for the UNDSS and ISA are listed below:

<p>Enoch Penney-Laryea          Security Adviser for Bahamas, Bermuda, Cayman Islands, Jamaica, and Turks &amp; Caicos Islands          UN Department of Safety and Security          Cell: +1-876-360-7030          Satphone: +88 163 141 6827          Email: <a href="mailto:penney-laryea@un.org">penney-laryea@un.org</a>          Address: 1-3 Lady Musgrave Rd, Kingston 5, JAMAICA</p>	<p>Lance Smith          Field Security Associate (FSA)          UNDSS   Kingston   Jamaica          Tel: + 1-876-978-2390 Ext. 2059          Mobile: + 1-876-878-5800          Email: <a href="mailto:lance.smith@un.org">lance.smith@un.org</a>          Address: 1-3 Lady Musgrave Rd, Kingston 5, JAMAICA</p>
<p>Lincoln Campbell          Field Security Associate (FSA)          UNDSS   Kingston   Jamaica          Tel: + 1-876-978-2390 Ext. 2059          Mobile: + 1-876-469-1868          Email: <a href="mailto:lincoln.campbell@un.org">lincoln.campbell@un.org</a>          Address: 1-3 Lady Musgrave Rd, Kingston 5, JAMAICA</p>	<p>Sonja Phinn          Associate Security Officer          International Seabed Authority          Tel: +1-876-922-9105 Ext: 289          Mobile: +1-876-838-3902          Email: <a href="mailto:sphinn@isa.org.jm">sphinn@isa.org.jm</a>          Address: 14-20 Port Royal Street, Kingston</p>

<sup>1</sup> A “Critical Event” is defined as a crisis or emergency declared as a result of an exceptional, natural or manmade disaster that threatens the lives of UN/ISA staff and their eligible dependents as well as delegates attending ISA sessions. Such event may significantly disrupt normal activities (including movements and operations) in the duty station. The UNDSS recognised as critical events: natural disasters (including earthquake, hurricane, tsunami, extreme flooding, drought, heat, etc..), large scale terrorist attacks against UN/ISA interests, civil uprising/coup d’etat, epidemic or pandemic, manmade disaster (widespread fire...).

## Frequently asked questions

### 1. What are the advisable actions to take during and after an earthquake?

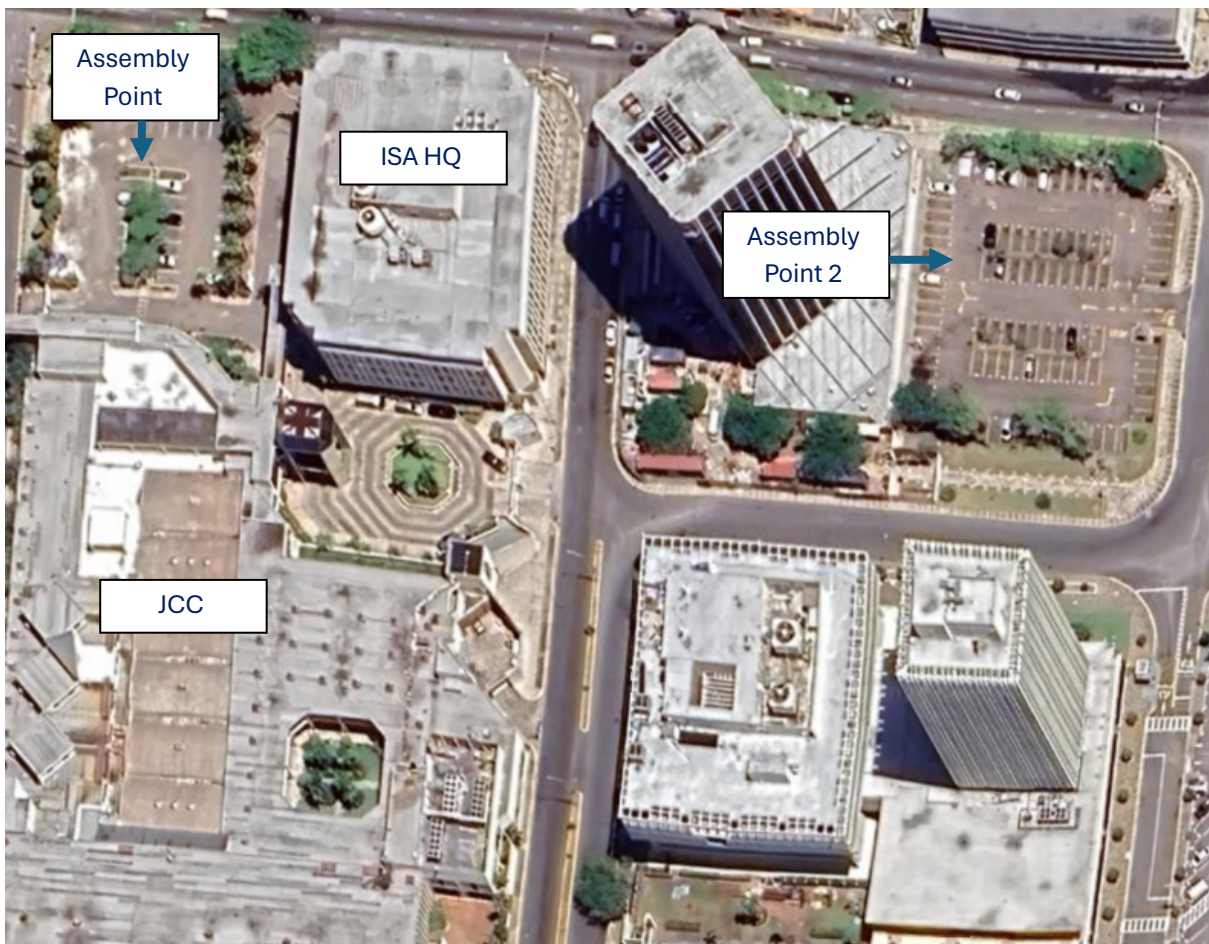
*UNDSS advises that during an earthquake the **DROP, COVER & HOLD ON** safety posture be adopted.*

- **DROP** down onto your hands and knees before the earthquake knocks you down.
- **COVER** your head and neck (and your entire body if possible) underneath a sturdy table or desk or in a sturdy door jam.
- **HOLD ON** to your shelter (or to your head and neck) until the shaking stops.

*Thereafter, safe **EVACUATION** is the priority. Immediately after an earthquake proceed to the nearest assembly point.*

### 2. Where are the assembly points for the Jamaica Conference Centre (JCC) and the ISA Headquarters?

*The primary assembly point for the JCC/ISAHQ is the internal carpark located at the rear of the facility. Depending on the nature of the emergency a second assembly point has been identified as the Scotiabank/Bank of Jamaica (BOJ) car park .*



### 3. How do you get to the assembly points from the JCC or the ISAH?

*Emergency exit points are located on both floors of the Secretariat building (4 exits on the second floor and 2 on the first floor). These are in addition to the regular entrance/exit points, which can also be used in the event of an emergency.*

*The emergency exit points at the JCC are clearly labelled. To get to the assembly point, proceed to the closest exit or emergency exit point and follow the route until you are outside the building.*

*Follow the instructions/guidance of the host government support agencies (Jamaica Constabulary Force – Police, Jamaica Fire Brigade and Ministry of Health) on location, safety wardens and security personnel.*

### 4. Where are the emergency evacuation Centres in Kingston (Jamaica)?

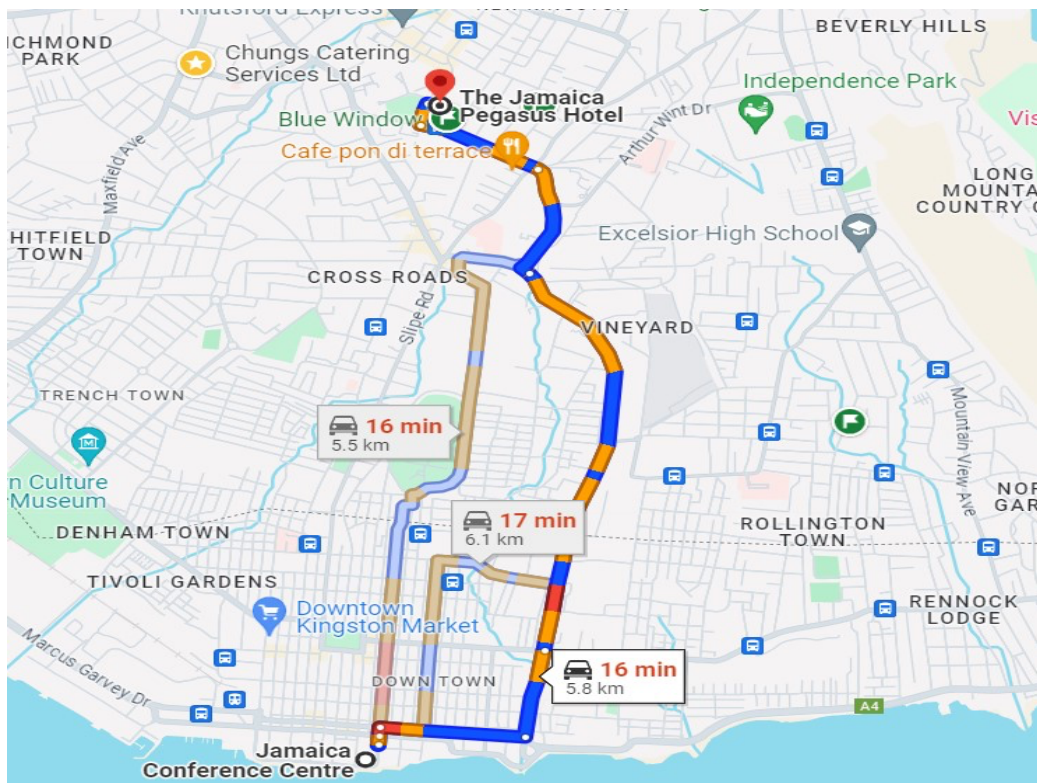
*The emergency evacuation centres in Kingston are The Jamaica Pegasus Hotel, Liguanea Club & the Norman Manley International Airport.*

	<b>NAME</b>	<b>ADDRESS</b>	<b>TELEPHONE</b>	<b>COORDINATES</b>
CP 1	Jamaica Pegasus Hotel	81 Knutsford Blvd., Kingston 5	+1.876.926.3690;	Lat. 18° 0'10.33"N – Long. 76°47'16.88"W.
CP 2	Liguanea Club	53 Knutsford Blvd., Kingston 5	+1.876.926.8144 - +1.876.926.8146	Lat. 18° 0'15.49"N – Long. 76°47'18.07"W.
CP 3	Norman Manley International Airport (at the general staff parking where diplomats are allowed to park)	Palisadoes, Kingston	+1.876. 924.8452	Lat. 17°56'15.73"N – Long. 76°46'42.18"W



## Route Maps to each Concentration Point

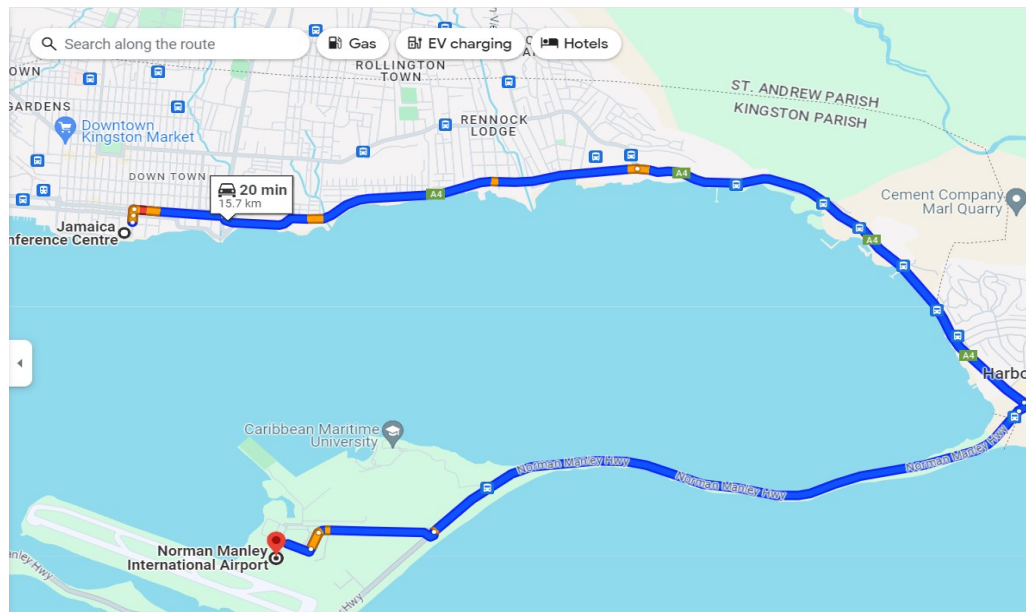
### CP1 – Pegasus Hotel



### CP2 – Liguanea Club



## CP3 – Norman Manley International Airport



### 5. What is the name of the agency responsible for emergency response in Jamaica?

*The national agency in Jamaica responsible for emergency response is the Office of Disaster Preparedness and Emergency Management. Address: 2-4 Haining Rd, Kingston; Phone: [+1-876-906-9674](tel:+18769069674).*